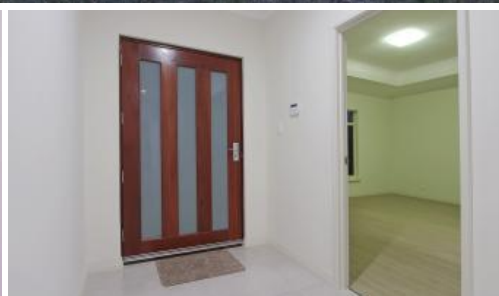


Sold



72 Bradstocks Grove, Southern River



## NEW PRICE!!!!!! MUST BE SOLD! MAKE AN OFFER TODAY!

WHY BUILD WHEN THIS QUALITY AND BEAUTIFUL HOME IS READY  
TO MOVE IN!!

This spacious 4 bedrooms 2 bathrooms home has almost  
everything you would need. Just recently built in 2017 by  
prestigious Presidential Homes and FHOG is applicable.

### INTERIOR

Solid Jarrad front door with grazed glass under the cedar  
lined portico

Timber floored master bedroom with centred recess  
ceiling. Huge built-in robe with shelves. Enclosed ensuite  
with double vanity, shower with semi-frameless shower  
screen. Built-in recess for necessities with stainless finished  
trimming. Separate enclosed toilet with hand basin.

🛏 4 🚿 2 🚗 2

Price	SOLD
Property Type	Residential
Property ID	264

### Agent Details

Ernest Ng - 0415 154 526

### Office Details

Austpro Properties  
Booragoon  
17A Mills St Cannington, WA,  
6107 Australia  
0861181628



Enclosed timber floored theatre room

Double glazed doors separate the master bedroom from the main areas of the home

Glossy large porcelain tiles to passageway and living areas with skirting

High ceiling throughout the home.

Living room with built-in gas heater, built in recess for Television and 2 recess against the wall for cupboards or display units.

Big L-shaped Kitchen stone bench with plenty of cupboards for storage. It is equipped with 5 gas stove cooker, Range hood and Omega electric oven. All doors and drawers are soft closings. A centre stone bench island with double sink and quality tap wares

The dining area has access to the alfresco

Bedroom 2 is timber floored with walk-in robe

Bedroom 3 and bedroom 4 are timber floored with 2 sliding doors built in robes

Quality window treatments to all windows and doors

Big linen cupboard along in the passageway in the back

Laundry with under cupboard under the through

Minor bathroom with single vanity, bathtub and shower with shower screen. Stainless finished trimming to the wall between the bench top and shower

The main toilet is next to the minor bathroom with hand basin

Security alarm system

Under the roof alfresco with exposed concrete floor

EXTERIOR

Double bigger locked up garage with cupboard. Rear door accessing to the back garden

Exposed concrete driveway

Automatic reticulation

Low maintenance paved backyard with just garden beds

2 mins drive to Bletchley Park Primary School

4 mins drive to shops, supermarket and eateries.

LAND SIZE: 444 q m

LIVING AREA: 206 sqm approx.

TOTAL AREA: 247 sqm approx

The information contained is the opinion only of Austpro Properties. All parties to which this advertisement intended for should exercise their own due diligence as to the accuracy of the information provided. Austpro Properties will take absolutely no responsibility for any actions arising from any parties acting on this information contact within

The above information provided has been furnished to us by the vendor/s. We have not verified whether or not that information is accurate and do not have any belief in one way or the other in its accuracy. We do not accept any responsibility to any person for its accuracy and do no more than pass it on. All interested parties should make and rely upon their own inquiries in order to determine whether or not this information is in fact accurate.