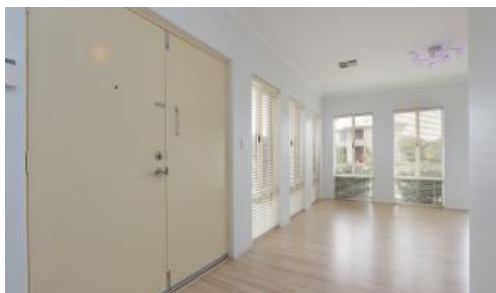


Sold



26 Middle Parkway, Canning Vale



SOLD! More Wanted!

Sold before the first home open!

If you are planning to grow your family but having difficulties with space and room, your chance is here. It is not easy to find a house that can accommodate the needs of everyone but I found you a perfect home.

This is not an ordinary house but a whopping 4 bedrooms and 3 bathrooms family home so everyone will have space for themselves.

Built by RedInk Homes (Scott Park Group) in 2012, this home is well situated opposite the park and playground and it is within the Ranford Primary School zone. The nearest bus stop is within 3 minutes walking distance and the Canning Vale IGA, Livingston Shopping Centre, 7-Eleven Service Station, Sanctuary Waters Parkland and the Gosnells Golf Club are all within the short stroll.

This home features:

Gated front garden with artificial turf, concrete paved walkways and small

The above information provided has been furnished to us by the vendor/s. We have not verified whether or not that information is accurate and do not have any belief in one way or the other in its accuracy. We do not accept any responsibility to any person for its accuracy and do no more than pass it on. All interested parties should make and rely upon their own inquiries in order to determine whether or not this information is in fact accurate.

🛏 4 🚿 3 🚌 2

Price	SOLD
Property Type	residential
Property ID	696
Land Area	465 m2
Floor Area	185 m2

Agent Details

Ernest Ng - 0415 154 526
Andre Rodrigues - 0422769264

Office Details

Austpro Properties
Unit 1 38 Mason St Cannington WA
6107 Australia
0415 154 526

