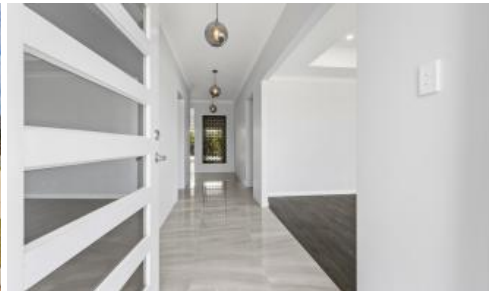


Under Contract



1 Bergen Promenade, Southern River



Immaculate in every detail

UNDER OFFER BY SUSAN NG & ERNEST NG

Price Guide: Mid-\$600k

Immaculate, gorgeous and exquisite, these are the best words to describe this quality home. Situated in Bletchley Park Estate of Southern River, this home is perfect for all families and it ticks all your boxes.

Walking into the large entrance, you will be greeted by the polished tiled flooring and extended high ceiling. Theatre room/entertainment area is just situated at your right with recessed ceilings and pendant light fittings. It is great to have a front living room as you will enjoy the view on the parkland opposite with plenty of light coming in from the front.

Then you will enjoy the large master bedroom, comes with recessed ceiling, huge walk-in wardrobe, ensuite bathroom with double vanity, separate toilet and glass door shower.

Walking through the feature wall, architecturally designed, you will reach the open plan living and dining area, featuring extended high ceiling, bright skylight and natural paint colour. There is an additional digital corner or IT

The above information provided has been furnished to us by the vendor/s. We have not verified whether or not that information is accurate and do not have any belief in one way or the other in its accuracy. We do not accept any responsibility to any person for its accuracy and do no more than pass it on. All interested parties should make and rely upon their own inquiries in order to determine whether or not this information is in fact accurate.

🛏 4 🚿 2 🚗 2

Price	UNDER OFFER
Property Type	residential
Property ID	747
Land Area	450 m2
Floor Area	194 m2

Agent Details

Ernest Ng - 0415 154 526

Susan Ng - 0402 447 838

Office Details

Austpro Properties

Unit 1 38 Mason St Cannington WA

6107 Australia

0415 154 526

